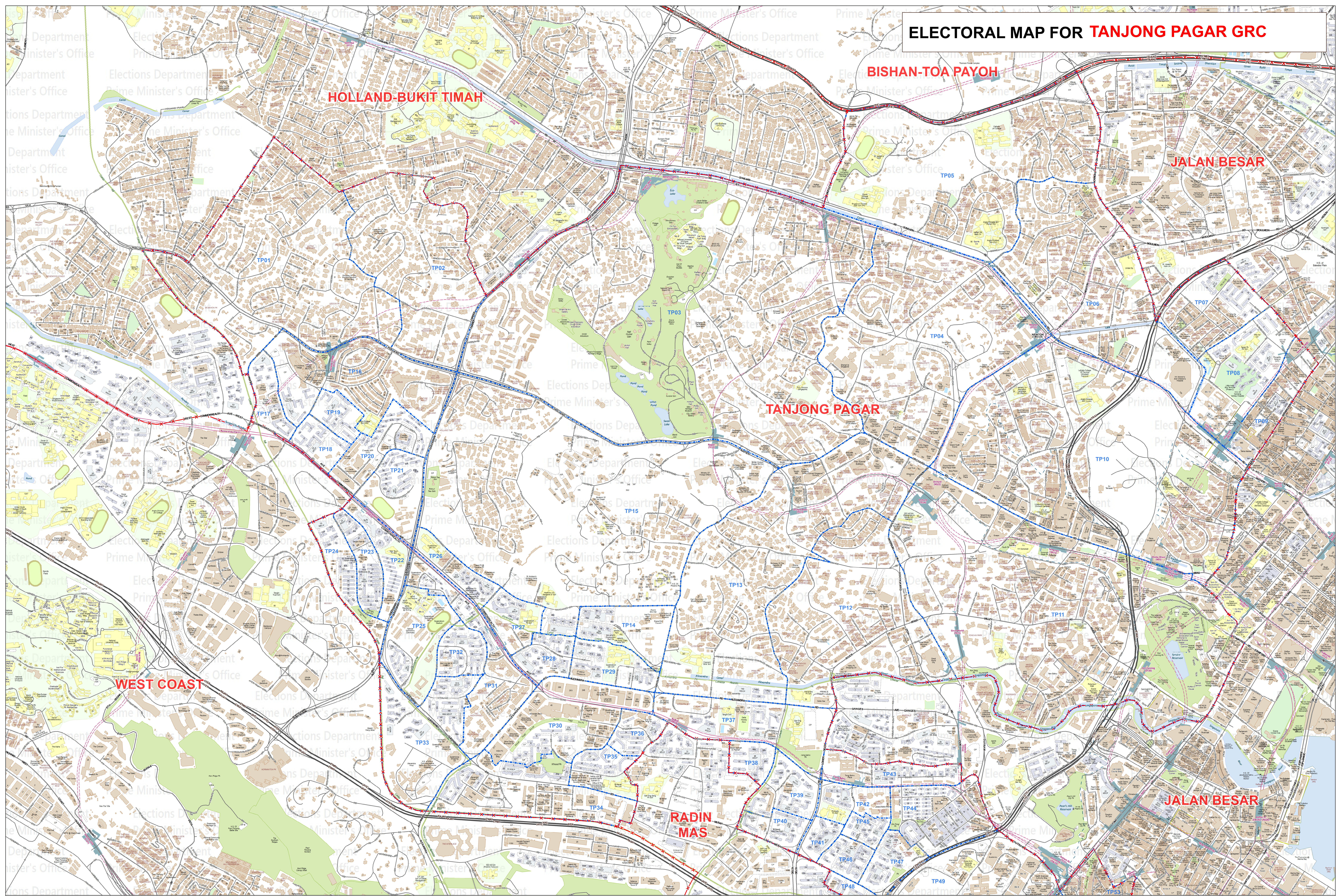


ELECTORAL MAP FOR TANJONG PAGAR GRC



Legend

- HDB Building
- Non-HDB Building
- MRT/LRT Station

ELECTORAL MAP FOR TANJONG PAGAR GRC

ELECTORAL DIVISION - - - - -

POLLING DISTRICT

SCALE 1:7,500

MAP 1 of 2

Electoral division and polling district boundaries do not represent the extent of Singapore's territorial waters

Boundary Data : Updated as of 3 January 2025

Electoral and Polling District Boundaries : Updated as of 14 February 2025

SLA

ALL RIGHTS RESERVED

No part of this publication may be reproduced, stored in a retrieval system, or transmitted, in any form or by any means, electronic, mechanical, photocopying, recording, or by any information storage and retrieval system, without prior written permission of the Singapore Land Authority.

Geographical Names & Coordinates/Geographical & Data

Singapore Land Authority

15 Selegie Road, Singapore and Business Service Centre

Level 15, Republic Tower

Singapore 371997

ELECTORAL MAP FOR TANJONG PAGAR GRC



Legend

- HDB Building
- Non-HDB Building
- MRT/LRT Station

ELECTORAL MAP FOR TANJONG PAGAR GRC

ELECTORAL DIVISION —X—X—X—X—

POLLING DISTRICT

SCALE 1:7,500

MAP 2 OF 2

Electoral divisions and polling district boundaries do not represent the extent of Singapore's territorial waters.

Electoral Data: Updated on 31 January 2025

Electoral and Polling District Boundaries: Updated as at 14 February 2025

SLA

ALL RIGHTS RESERVED

No part of this publication may be reproduced, stored in a retrieval system, or transmitted in any form or by any means, electronic, mechanical, photocopying, recording, or by any information storage and retrieval system, without prior written permission of the Singapore Land Authority.

Geographic Information Systems & Cartography Division

100 Robinson Road, Singapore 068906

Land Use Planning Division

Singapore 201797